

**THE PEOPLE'S BLOC**

**Strengthening Map K2.5 towards Racial Equity**  
**October 9<sup>th</sup>, 2021**

# Who we are and what we stand for

## People's Bloc Members

- ActiveSGV
- Advancement Project California
- AltaMed Health Services
- Anti-Recidivism Coalition
- AWOKE/The GR818ERS
- Black Census and Redistricting Hub
- Black Women for Wellness
- CAIR- LA
- CARECEN
- Casa Esperanza
- CHIRLA
- Community Coalition
- Communities for A Better Environment
- Comunidades Indigenas en Liderazgo (CIELO)
- Dolores Huerta Foundation
- Inner City Struggle
- Khmer Girls in Action
- LA Black Worker Center
- LA Voice
- Latino Equality Alliance
- Little Tokyo Service Center
- Long Beach Forward
- Long Beach Immigrant Rights Coalition
- Newstart Housing Corporation
- Nuestro Voto
- Pacoima Beautiful
- Power California
- Salvadoran American Leadership and Educational Fund
- SCOPE
- SELA Collaborative
- Social Justice Learning Institute
- South Asian Network
- The Community Action League
- Tia Chucha's Centro Cultural

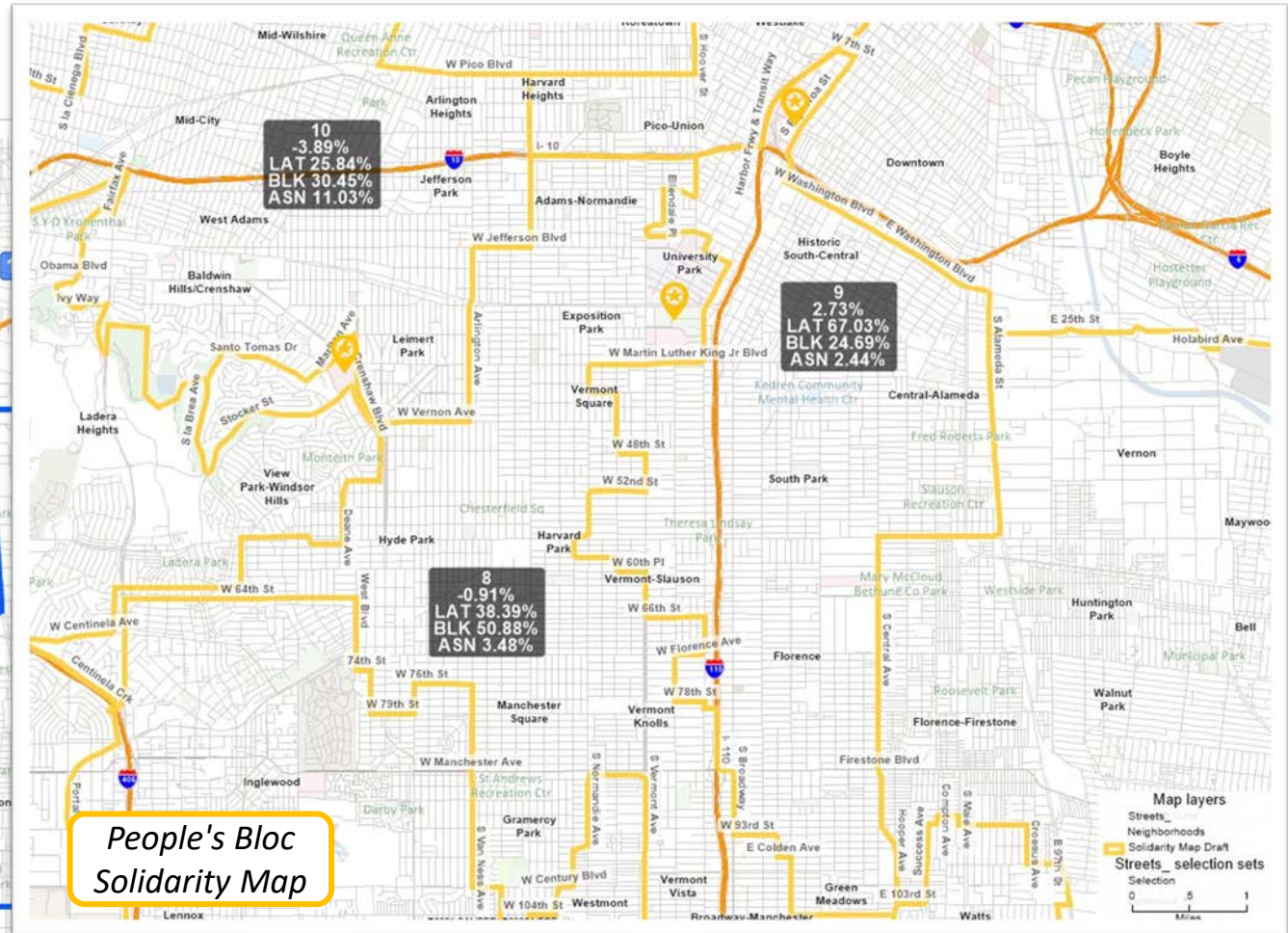
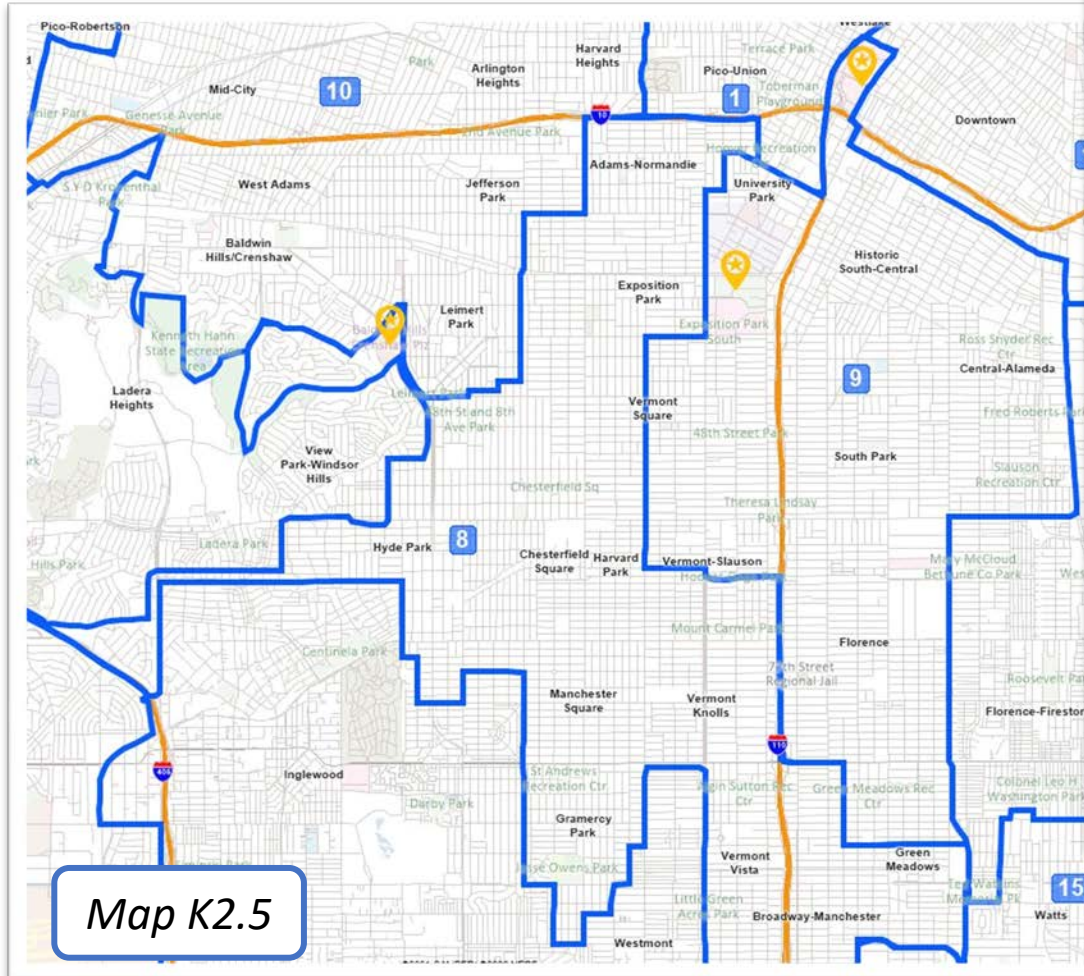


# Which of our Solidarity Map priorities can strengthen the K2.5 Map

- 1) Priority: Preserve assets of District 8 and maintain 50%+1 Black CVAP  
Recommendation for K2.5: Join USC to CD8 and maintain the mall in CD8.
- 2) Priority: Preserve assets of District 9 and keep up Black CVAP above 20%  
Recommendation for K2.5: Extend LA Live asset in CD9



# How K2.5 can become a stronger map



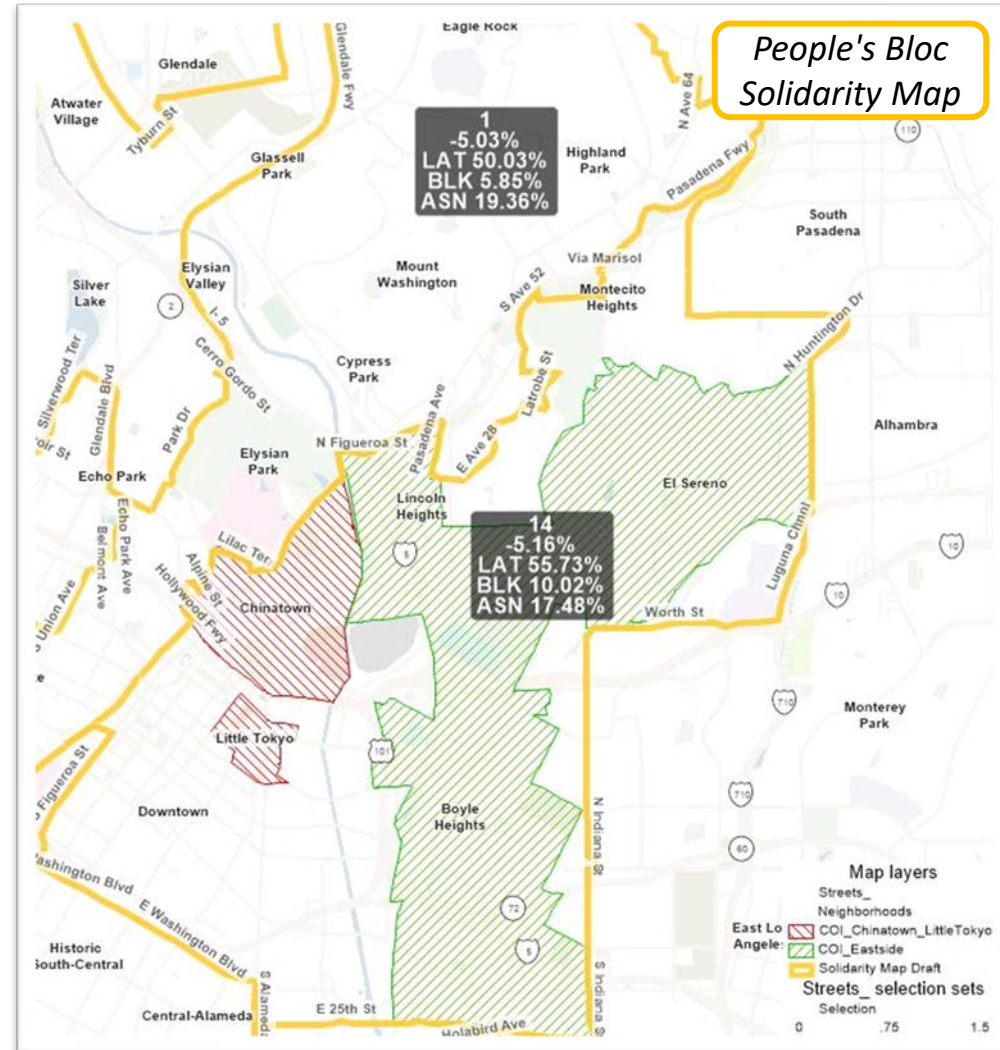
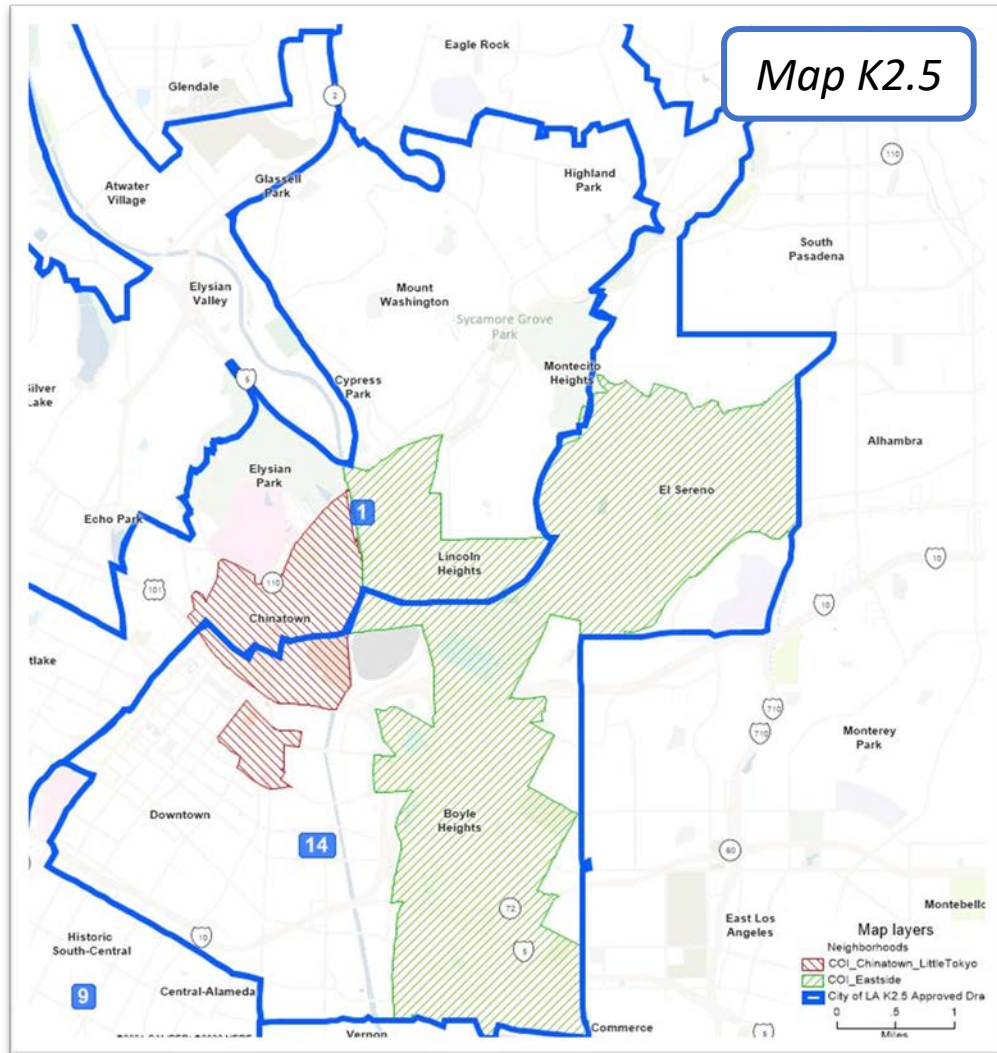
# Which of our Solidarity Map priorities can strengthen the K2.5 Map

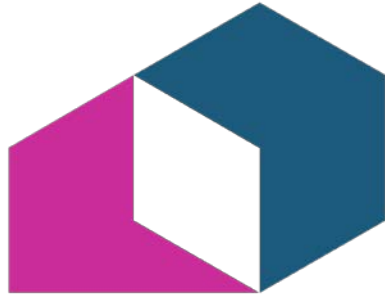
3) Priority: Keep the communities of Boyle Heights, El Sereno, and Lincoln Heights together  
Recommendation for K2.5: Join Lincoln Heights to CD14

4) Priority: Keep Chinatown and Little Tokyo whole and together.  
Recommendation for K2.5: Join all of Chinatown to CD14.



# How K2.5 can become a stronger map





**THE PEOPLE'S BLOC**

*Thank you.*